

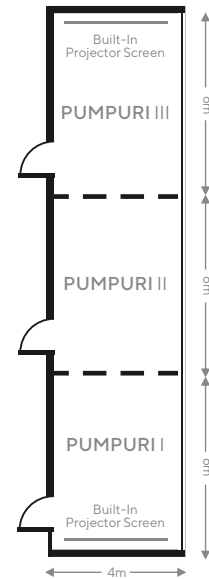
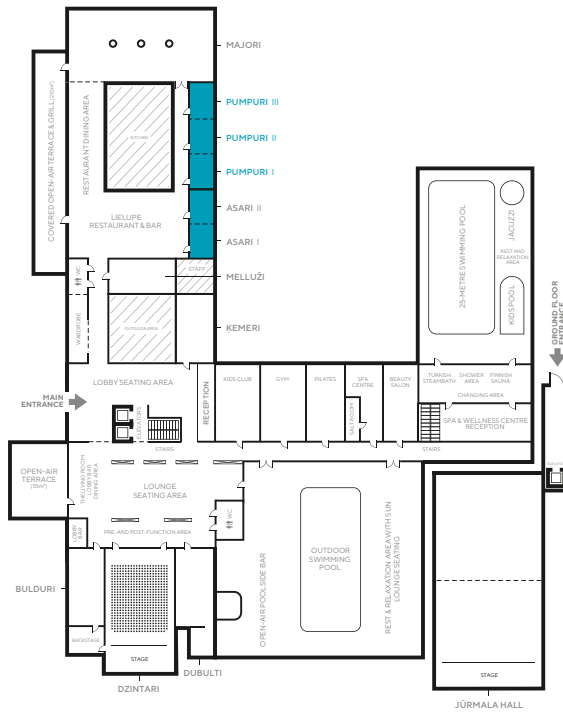
PUMPURI I, PUMPURI II, PUMPURI III

ROOM DETAILS

Sleek meeting rooms on the first floor are divisible into two or three separate spaces flexible to accommodate smaller functions or to host simultaneous events for your group. The rooms display a full wall of floor-to-ceiling windows overlooking the courtyard. Room seating and tables will be set according to your request.

INCLUDED:

- Complete Event Consultation and Support
- Welcome Display
- Video Capabilities (Projector and Screen)
Mitsubishi XD700U, 1024 x 768, 4300 lm / INPUT: HDMI, VGA
PUMPURI II: Mobile Projector 1024 x 768 / INPUT: HDMI, VGA
- Audio Capabilities (Built-In Speaker System)
Audac 120W / INPUT: RCA, MICROPHONE: XLR
- Flip-Chart and Markers
- Notepads and Pens
- Wireless Internet Access
- Water



ROOM CAPACITY (PERSONS)

| | ROOM CAPACITY (PERSONS) | | | | | | ROOM DIMENSIONS | | | |
|------------------|-------------------------|-----------|-----------|---------|-----------|---------|------------------------|----------|------------|------------------|
| | CABARET | CLASSROOM | BOARDROOM | U-SHAPE | RECEPTION | THEATRE | AREA (m ²) | SIZE (m) | HEIGHT (m) | NATURAL LIGHTING |
| PUMPURI I | 8 | 12 | 10 | 14 | 15 | 20 | 24 | 6x4 | 3 | Yes |
| PUMPURI II | 8 | 12 | 10 | 14 | 15 | 20 | 24 | 6x4 | 3 | Yes |
| PUMPURI III | 8 | 12 | 10 | 14 | 15 | 20 | 24 | 6x4 | 3 | Yes |
| PUMPURI I+II | 16 | 24 | 24 | 20 | 30 | 40 | 48 | 12x4 | 3 | Yes |
| PUMPURI II+III | 16 | 24 | 24 | 20 | 30 | 40 | 48 | 12x4 | 3 | Yes |
| PUMPURI I+II+III | 24 | 36 | 32 | 30 | 50 | 60 | 72 | 18x4 | 3 | Yes |

Bulduru prospekts 64/68, Jūrmala, **+371 6611 8537**, conferences@semarahhotels.com, semarahhotels.com/lielupe