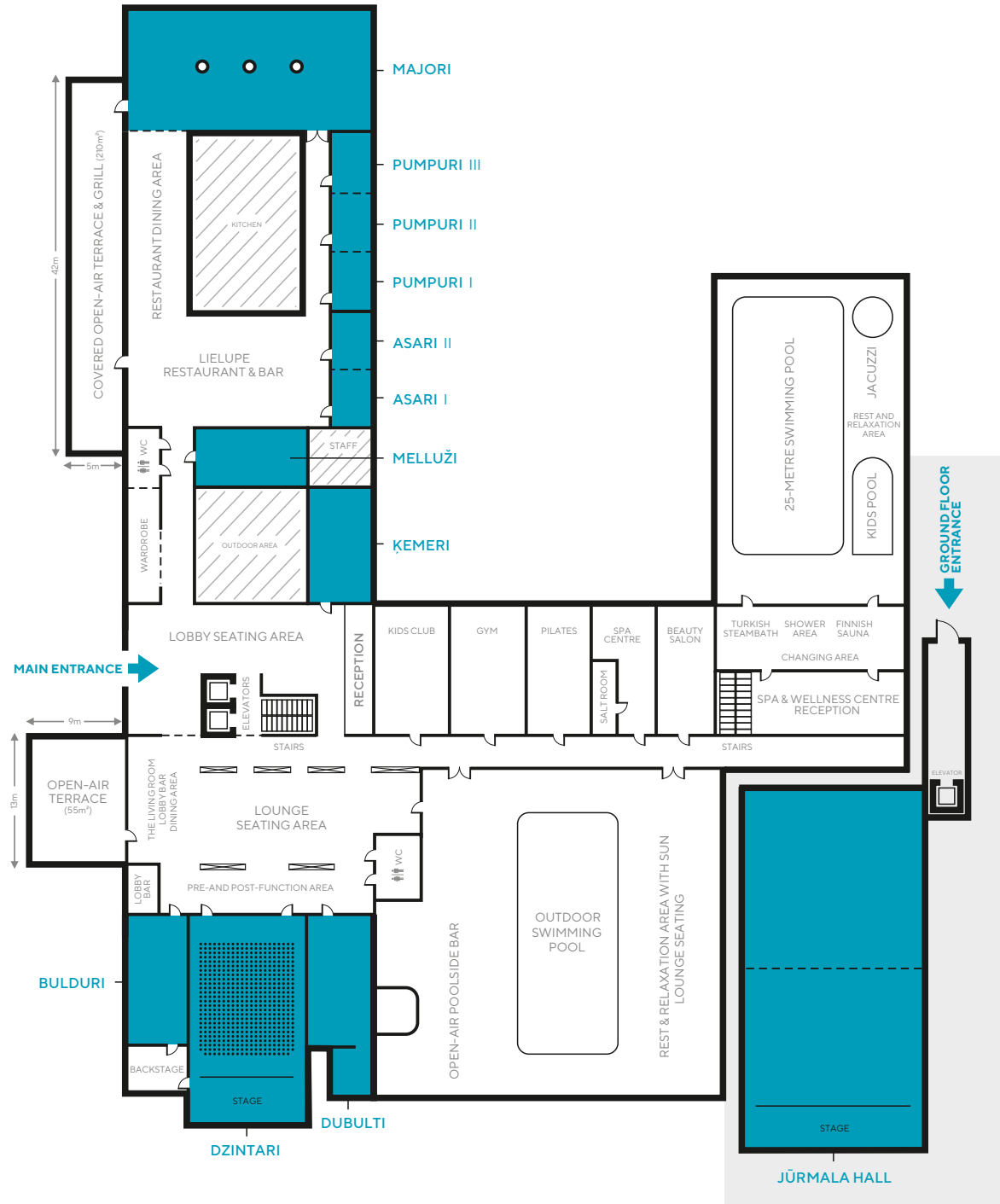


CONFERENCES & EVENTS FLOOR PLAN

MAIN FLOOR, LIELUPE HOTEL BY SEMARAH

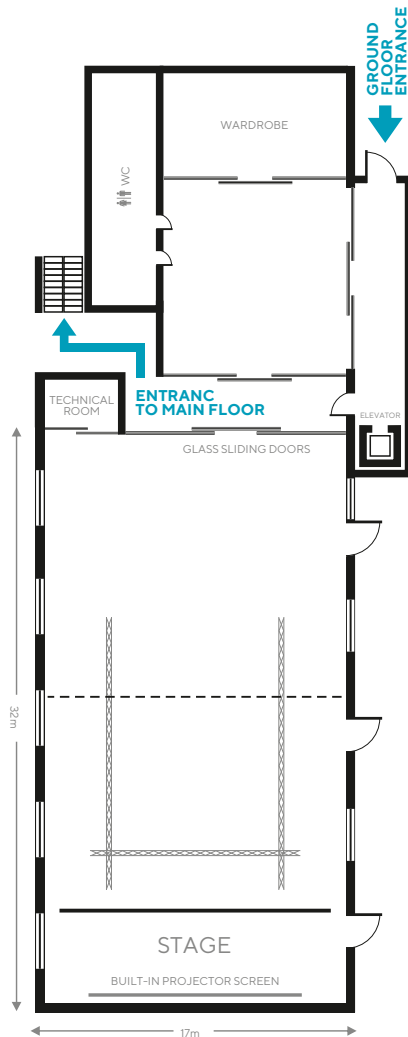


Bulduru prospekts 64/68, Jūrmala, **+371 6611 8537**, conferences@semarahhotels.com, semarahhotels.com/lielupe

JŪRMALA HALL

VENUE DETAILS

Impressive rectangular space with contemporary décor delights with modern design elements and large windows on both sides, the Jūrmala Hall is our modern interpretation of a grand European ballroom. An operable partition system can divide the room in half, providing complete flexibility and versatility in event design for up to 450 guests. Your special event will unfold magically beneath ultra-high ceilings with one of the most technologically advanced audiovisual systems, lighting, and sophisticated staging capabilities of its kind in Jūrmala.



INCLUDED:

- Complete Event Consultation and Support
- Welcome Display
- Video Capabilities (Projector and Screen)
 - Main Projector – Optoma® Wu1500
 - Screen – 700 x 438
- Audio Capabilities (Built-In Speaker System)
 - Front Active Speaker – Electro-Voice® ELX112P
 - Active Subwoofers – Electro-Voice® ELX118P
 - Retention Speakers – Electro-Voice® Zx1
 - Digital Sound System Processor – Electro-Voice® DC-One
 - Audio Amplifier – Electro-Voice® Pa4150
 - Behringer Xenyx QX2442USB- Sound Mixer
 - Wireless Headset System – Sennheiser® XSW 52
 - Wireless Presentation Set – Sennheiser® XSW 12
 - Wireless Voice/Vocal Set – Sennheiser® XSW 65
- Lighting Capabilities
 - Control Panel – Lenovo® 7 Tablet
 - Lighting Controlling System – ArtNET®
 - White Stage Lighting – LED Par 64 RGBW
 - Lighting – LED Par 64 RGB DMX
- Flip-Chart and Markers
- Notepads and Pens
- Wireless Internet Access

ROOM CAPACITY (PERSONS)

BANQUET	CLASSROOM	BOARDROOM	U-SHAPE	RECEPTION	THEATRE
300	200	100	100	450	600

ROOM DIMENSIONS

AREA (m ²)	SIZE (m)	HEIGHT (m)	NATURAL LIGHTING
544	17x32	5,8	Yes

Bulduru prospekts 64/68, Jūrmala, **+371 6611 8537**, conferences@semarahhotels.com, semarahhotels.com/lielupe

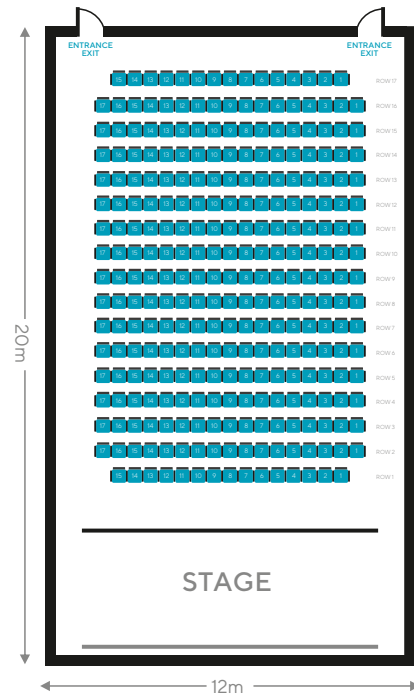
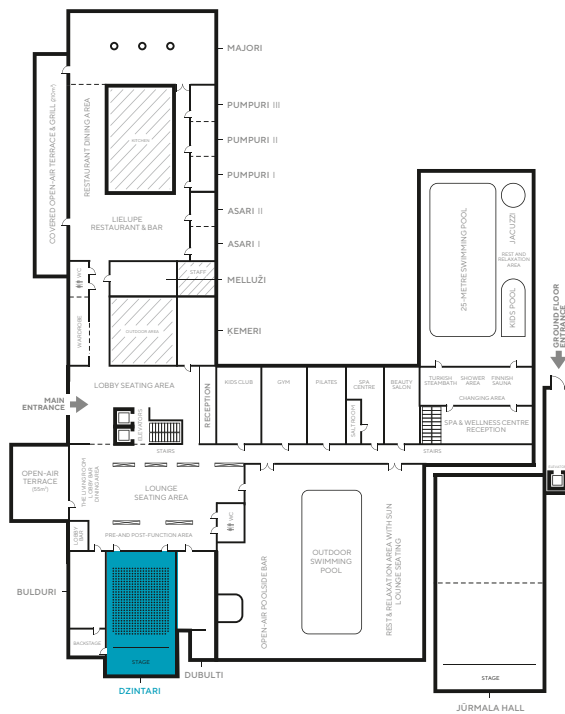
DZINTARI

AUDITORIUM DETAILS

The largest, one-of-a-kind auditorium in Jūrmala, with a total event space for up to 285 participants. Featuring state-of-the-art audiovisual technologies, including a high-end projector to ensure picture-perfect image quality, a sound reinforcement system that resonates speech sound of the highest quality and an ultra-high ceiling. The Dzintari auditorium is the ideal location for corporate gatherings, school, university and other ceremonies, musical events and concerts.

INCLUDED:

- Complete Event Consultation and Support
- Welcome Display
- Video Capabilities (Projector and Screen)
Canon XEED WUX7000Z / 7000 lumen / WUXGA resolution (1920 x 1200) / INPUT: HDMI
- Audio Capabilities (Built-In Speaker System)
Electro Voice 2000W / INPUT: XLR
- Flip-Chart and Markers
- Notepads and Pens
- Wireless Internet Access



ROOM CAPACITY (PERSONS)

BANQUET	CLASSROOM	BOARDROOM	U-SHAPE	RECEPTION	THEATRE
-	-	-	-	-	285

ROOM DIMENSIONS

AREA (m ²)	SIZE (m)	HEIGHT (m)	NATURAL LIGHTING
240	20x12	5	No

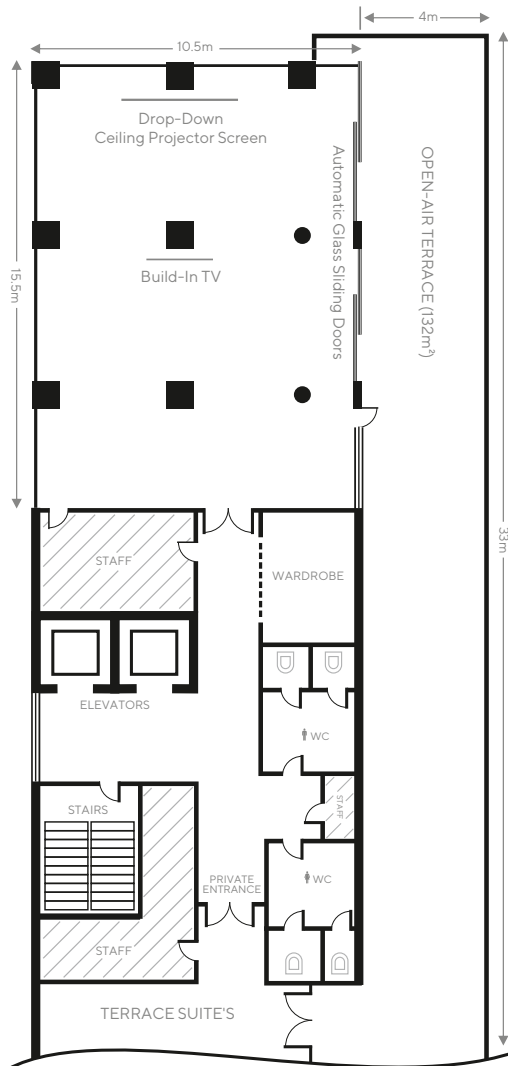
Bulduru prospekts 64/68, Jūrmala, **+371 6611 8537**, conferences@semarahhotels.com, semarahhotels.com/lielupe

PANORĀMA

EVENT ROOM DETAILS

The hotel's rooftop venue on the tenth-floor is flooded with natural light and displays floor-to-ceiling panoramic windows, highlighting the beautiful views overlooking the Baltic Sea and pine treetops of Jūrmala. The private and ultra-spacious outdoor terrace truly takes your breath away with a gentle, ionized seaside breeze, the calming sway of aromatic pine trees and every splendid sunset entice your senses. Room seating and tables will be set according to your request.

10TH FLOOR



INCLUDED:

- Complete Event Consultation and Support
- Welcome Display
- Video Capabilities (Projector and Screen)
Canon XEED WUX500 / 5000 lumen / WUXGA resolution (1920 x 1200) / INPUT: HDMI
- Audio Capabilities (Built-In Speaker System)
Electro Voice 600W / INPUT: XLR
- Flip-Chart and Markers
- Notepads and Pens
- Wireless Internet Access

ROOM CAPACITY (PERSONS)

BANQUET	CLASSROOM	BOARDROOM	U-SHAPE	RECEPTION	THEATRE
60	42	30	20	80	80

ROOM DIMENSIONS

AREA (m ²)	SIZE (m)	HEIGHT (m)	NATURAL LIGHTING
160	15,5x10,5	2,5	Yes

Bulduru prospekts 64/68, Jūrmala, **+371 6611 8537**, conferences@semarahhotels.com, semarahhotels.com/lielupe



LIELUPE

HOTEL BY SEMARAH

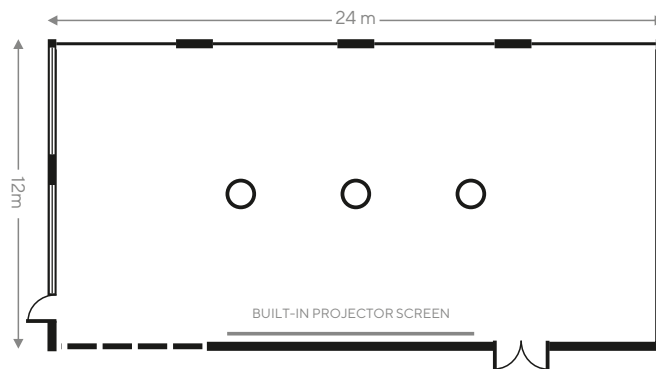
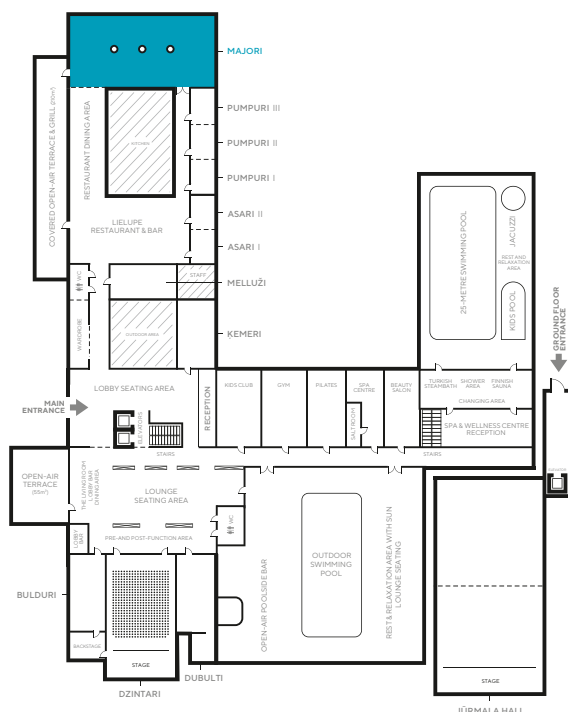
MAJORI

BANQUET ROOM DETAILS

Reflects a warm, inviting ambience situated away from the hotels main public areas, creating a feeling of privacy, opens up to an ultra-spacious covered open-air terrace and grill. Can comfortably accommodate up to 150 guests banquet-style and features a dramatic oversized bubble pendant lighting décor providing an elegant glow for your special occasion both day and night. Banquet room Majori is the ideal location for glamorous weddings, pre-function cocktails, welcome receptions, gala parties, celebrations and stylish corporate functions. Room seating and tables will be set according to your request.

INCLUDED:

- Complete Event Consultation and Support
- Welcome Display
- Video Capabilities (Projector and Screen)
Mitsubishi XD700U, 1024 x 768, 4300 lm / INPUT: HDMI, VGA
- Audio Capabilities (Built-In Speaker System)
Audac 800W / INPUT: RCA
- Flip-Chart and Markers
- Notepads and Pens
- Wireless Internet Access



ROOM CAPACITY (PERSONS)

BANQUET	CLASSROOM	BOARDROOM	U-SHAPE	RECEPTION	THEATRE
150	70	40	42	150	120

ROOM DIMENSIONS

AREA (m ²)	SIZE (m)	HEIGHT (m)	NATURAL LIGHTING
288	24x12	4	Yes

Bulduru prospekts 64/68, Jūrmala, **+371 6611 8537**, conferences@semarahhotels.com, semarahhotels.com/lielupe



LIELUPE

HOTEL BY SEMARAH

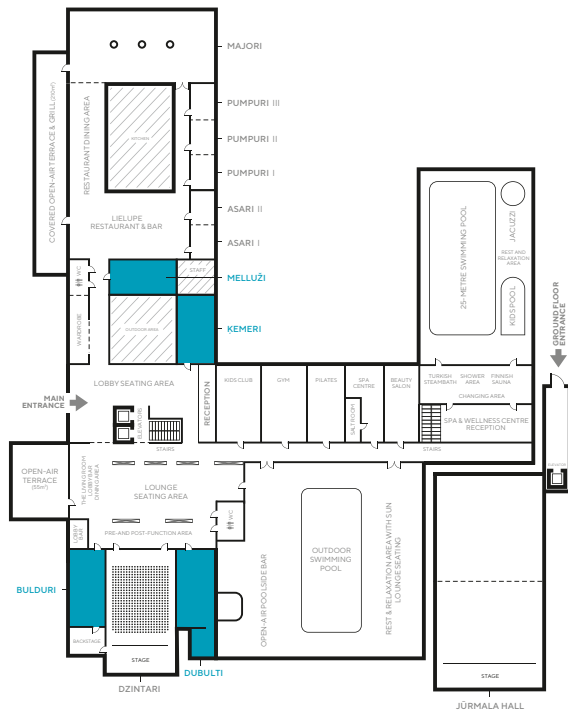
BULDURI, DUBULTI, ĶEMERI, MELLUŽI

ROOM DETAILS

One of the largest meeting spaces, perfect for all-day meetings. Chic, simple décor allows complete versatility in event design - minimizing distractions and enhancing productivity. Located next to a spacious lobby lounge, making it extremely convenient for networking during coffee breaks and pre/post functions. Room seating and tables will be set according to your request.

INCLUDED:

- Complete Event Consultation and Support
- Welcome Display
- Video Capabilities (Projector and Screen)
BULDURI, DUBULTI: Laser projector Epson EB L510 / 5000 lumen / WUXGA resolution (1920 x 1200) / INPUT: HDMI;
ĶEMERI, MELLUŽI: Laser projector Epson EB L530U / 5,200 lumen / WUXGA resolution (1920 x 1200) / INPUT: HDMI
- Audio Capabilities (Built-In Speaker System)
Audac 160W / INPUT: RCA, MICROPHONE: XLR
DUBULTI: Taga TCV100R 300W / INPUT: XLR
- Flip-Chart and Markers
- Notepads and Pens
- Wireless Internet Access



ROOM CAPACITY (PERSONS)

ROOM DIMENSIONS

	CABARET	CLASSROOM	BOARDROOM	U-SHAPE	RECEPTION	THEATRE	AREA (m ²)	SIZE (m)	HEIGHT (m)	NATURAL LIGHTING
BULDURI	24	30	24	26	30	50	72	12x6	3	Yes
DUBULTI	24	34	24	26	30	60	72	12x6	3	Yes
ĶEMERI	24	30	24	26	30	50	72	12x6	3	Yes
MELLUŽI	24	30	24	26	30	50	72	12x6	3	Yes

Bulduru prospekts 64/68, Jūrmala, **+371 6611 8537**, conferences@semarahhotels.com, semarahhotels.com/lielupe



LIELUPE

HOTEL BY SEMARAH

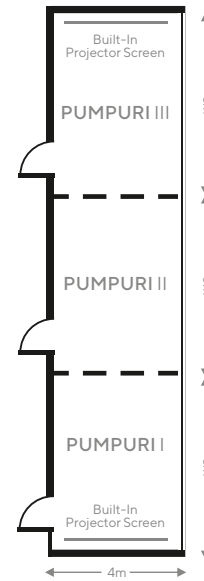
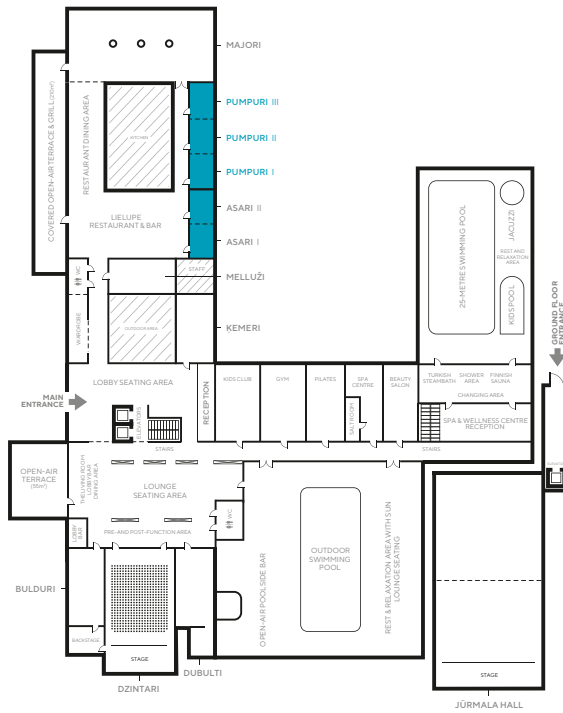
PUMPURI I, PUMPURI II, PUMPURI III

ROOM DETAILS

Sleek meeting rooms on the first floor are divisible into two or three separate spaces flexible to accommodate smaller functions or to host simultaneous events for your group. The rooms display a full wall of floor-to-ceiling windows overlooking the courtyard. Room seating and tables will be set according to your request.

INCLUDED:

- Complete Event Consultation and Support
- Welcome Display
- Video Capabilities (Projector and Screen)
Mitsubishi XD700U, 1024 x 768, 4300 lm / INPUT: HDMI, VGA
PUMPURI II: Mobile Projector 1024 x 768 / INPUT: HDMI, VGA
- Audio Capabilities (Built-In Speaker System)
Audac 120W / INPUT: RCA, MICROPHONE: XLR
- Flip-Chart and Markers
- Notepads and Pens
- Wireless Internet Access



ROOM CAPACITY (PERSONS)

	ROOM CAPACITY (PERSONS)						ROOM DIMENSIONS			
	CABARET	CLASSROOM	BOARDROOM	U-SHAPE	RECEPTION	THEATRE	AREA (m ²)	SIZE (m)	HEIGHT (m)	NATURAL LIGHTING
PUMPURI I	10	10	10	-	10	15	24	6x4	3	Yes
PUMPURI II	10	10	10	-	10	15	24	6x4	3	Yes
PUMPURI III	10	10	10	-	10	15	24	6x4	3	Yes
PUMPURI I+II	20	20	18	-	20	30	48	12x4	3	Yes
PUMPURI II+III	20	20	18	-	20	30	48	12x4	3	Yes
PUMPURI I+II+III	30	30	24	-	30	45	72	18x4	3	Yes

Bulduru prospekts 64/68, Jūrmala, **+371 6611 8537**, conferences@semarahhotels.com, semarahhotels.com/lielupe

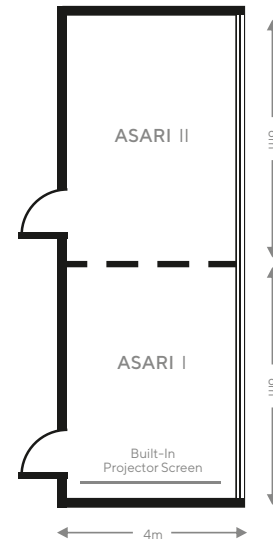
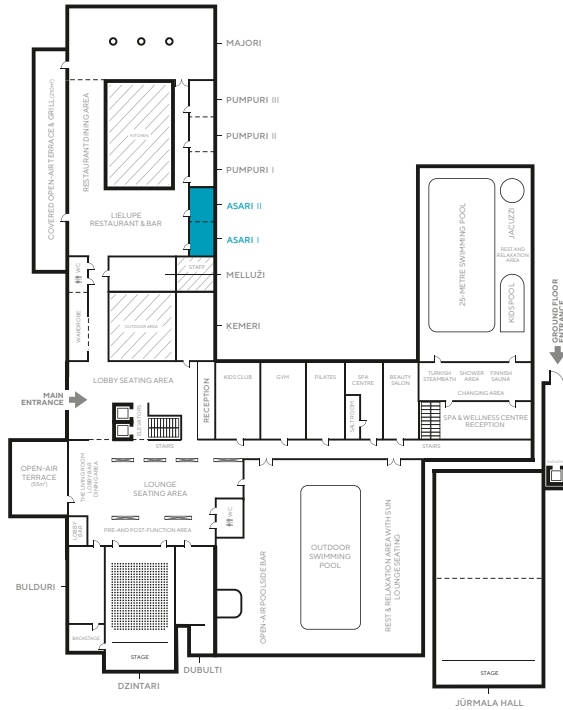
ASARI I, ASARI II

ROOM DETAILS

Flooded with natural light, handsomely designed and are divisible into two – flexible to accommodate smaller functions or to host two simultaneous events for your group. Room seating and tables will be set according to your request.

INCLUDED:

- Complete Event Consultation and Support
- Welcome Display
- Video Capabilities (Projector and Screen)
ASARI I: Hitachi CP-RX93 1024 x 768 / INPUT: HDMI, VGA
ASARI II: Mobile Projector 1024 x 768 / INPUT: HDMI, VGA
- Audio Capabilities (Built-In Speaker System)
Audac 120W / INPUT: RCA, MICROPHONE: XLR
- Flip-Chart and Markers
- Notepads and Pens
- Wireless Internet Access



ROOM CAPACITY (PERSONS)

ROOM DIMENSIONS

	ROOM CAPACITY (PERSONS)						ROOM DIMENSIONS			
	CABARET	CLASSROOM	BOARDROOM	U-SHAPE	RECEPTION	THEATRE	AREA (m ²)	SIZE (m)	HEIGHT (m)	NATURAL LIGHTING
ASARI I	10	10	10	-	10	15	24	6x4	3	Yes
ASARI II	10	10	10	-	10	15	24	6x4	3	Yes
ASARI I+II	20	20	18	-	20	30	48	12x4	3	Yes

Bulduru prospekts 64/68, Jūrmala, **+371 6611 8537**, conferences@semarahhotels.com, semarahhotels.com/lielupe